

INDIA'S MOST FUEL EFFICIENT BACKHOE LOADER.

NOW AVAILABLE IN 4 WHEEL DRIVE (4WD)



4WD

For years, earth moving products in India have remained the same, while technology around the world has been changing at a rapid pace. With rising fuel costs and increasing operational expenses, the profitability of customers has been taking a hit. Our designers at Mahindra – India's leading automotive and tractor manufacturer, looked at the current scenario and made some dramatic leaps in the technology of our own, self-designed Backhoe Loader specifically for Indian usage patterns.

After over 4 years of research and over 20,000 hours of machine testing under the harshest conditions, Mahindra is proud to launch the new Mahindra EarthMaster SX 4WD Backhoe Loader, a revolutionary new machine that will break all the standards in the 4WD Backhoe Loader category. Mahindra EarthMaster is a substantially more superior machine, with greater reliability, dramatically less maintenance, better operational kinematics and dynamics with a phenomenal fuel efficiency that saves at least a litre per hour.

BEST-IN-CLASS FUEL EFFICIENCY WITH THE PROVEN MAHINDRA DITEC ENGINE

Mahindra has taken its learnings from tractor engines, to bring its fuel efficiency down to an incredible 4.5* litres per hour.

- 10%** more savings with Mahindra's DITEC engine
- 58.8 kw (79.89 HP) Turbocharged intercooled diesel engine
- Fuel efficient, compact 4 cylinder, 3532cc engine
- BS III pollution compliant



LOW MAINTENANCE

**SUPER
SAVING**



LOW MAINTENANCE COST, MORE SAVINGS

With better technology and design enhancements, Mahindra has been able to lower lubricant refilling requirement with extended service intervals, thus reducing the overall maintenance cost.

- Hydraulic Oil: 50 litres with 2000 hours change interval
- Rear Axle Oil: 17.10 litres with 1500 hours change interval
- Front Axle Oil: 9.10 litres with 1500 hours change interval
- Engine Oil: 13 litres with 500 hours change interval
- Transmission Oil: 12 litres with 1000 hours change interval

Mahindra EarthMaster SX 4WD is backed with a one year warranty.
So you can enjoy peace of mind.

**1 YEAR[^]
WARRANTY**

SUPERIOR PRODUCTIVITY AND PERFORMANCE

Simple ideas, lead to great improvements. Mahindra EarthMaster is a substantially faster machine loaded with features that lead to far greater productivity.

- Banana Boom with 7%* * more reach
- Rugged and reputed Gear Pump
- Maximum Dig Depth: 4959 mm##
- Loader Dump Height: 2715 mm
- Maximum Load Over Height (Loader): 3267 mm



SUPERIOR CONVENIENCE AND COMFORTABLE DESIGN

Mahindra believes that the most important part of the machine, is the person operating it. That's why we have worked hard to make his experience the most comfortable for his long hours of work.

- Ergonomic layout and seating – all controls are smooth and easy to reach
- Advanced Mechanical Control Levers
- 21st century styling, with plush car like interiors
- Personal Storage Space and Tool Box with easy access

AVAILABLE WITH 6-IN-1 BUCKET



MAKING YOUR EQUIPMENT TRULY VERSATILE

EARTH DRILL/AUGER

TECHNICAL SPECIFICATIONS

- Max Depth - 2500 mm (1500 + 1000 ext.)
- Hole Size - 225 mm to 1000 mm
- Torque - 8152 Nm
- Drive - 75 mm square



ROCK BREAKER HD

TECHNICAL SPECIFICATIONS

- Weight - 405 kg
- Overall Height - 1870 mm
- Impact Rate - 400 bpm to 800 bpm
- Tool Diameter - 72 mm



STANDARD BACKHOE BUCKET

TECHNICAL SPECIFICATIONS

- Capacity - 0.09, 0.12, 0.18, 0.24, 0.27, 0.30 and 0.32 cum



CENTRALISED LUBRICATION SYSTEM (CLS)

TECHNICAL SPECIFICATIONS

- Reservoir Capacity - 4 kgs
- Grease Output - 2.8 cc/minute
- Voltage - 12 V
- Lubricant Grade - MCE grease up to NLGI II



SUGARCANE GRABBER

TECHNICAL SPECIFICATIONS

- Lift Capacity - 1 Ton
- Bucket Opening Length - 1010 mm
- Reach at Ground - 2719 mm



RIPPER TOOTH

TECHNICAL SPECIFICATIONS

- Weight - 105 kgs
- Tooth - Replaceable
- Body - Fabricated



QUICK COUPLER

TECHNICAL SPECIFICATIONS

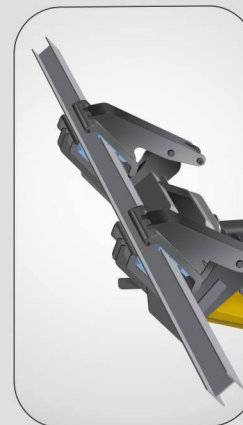
- Weight - 76 kgs
- Mounting Pin C.D. - 342 mm
- Operating Type - Mechanical



POLE ERECTOR

TECHNICAL SPECIFICATIONS

- Pole Cross section Type - I section & Rectangle section
- Max Pole Cross section - 200 mm (8 inch)
- Max Pole Length - 17 mts
- Max Pole Weight - 650 kg



V SHAPED - TAPERED DITCH BUCKET

TECHNICAL SPECIFICATIONS

- Width - 1100 mm
- Capacity - 0.13 cum
- Weight - 180 kgs



MAKING YOUR EQUIPMENT TRULY VERSATILE

DOZER BLADE

TECHNICAL SPECIFICATIONS

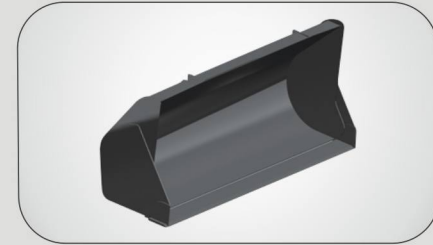
- Width - 2356 mm
- Height - 1028 mm
- Weight - 394 kg



LOADER COAL BUCKET

TECHNICAL SPECIFICATIONS

- Weight - 535 kg
- Overall Width - 2404 mm
- Capacity - 1.7 cum



STANDARD LOADER BUCKET

TECHNICAL SPECIFICATIONS

- Capacity - 1, 1.1 cum.
- Overall Width - 2404 mm (1.1 cum bucket)
- 2238 mm (1.0 cum bucket)



JIB CRANE

TECHNICAL SPECIFICATIONS

- Lift Capacity - 1 Ton
- Max Lift Height - 4750 mm
- Min Reach from Front Tyre Center - 1800 mm



SQUARE HOLE BUCKET

TECHNICAL SPECIFICATIONS

- Width - 764 mm
- Capacity - 0.24 cum
- Weight - 174 kg



6 IN 1 LOADER BUCKET

TECHNICAL SPECIFICATIONS

- Width - 2356 mm
- Capacity - 1.1 cum
- Weight - 698 kg
- Max Bucket Opening - 839 mm



FORKLIFT

TECHNICAL SPECIFICATIONS

- Lift capacity - 2 Ton
- Fork tine length - 1000 mm
- Weight - 150 kg
- Width - 1522 mm



DITCH CLEANING BUCKET

TECHNICAL SPECIFICATIONS

- Width - 1067 mm
- Capacity - 0.27 cum
- Weight - 176 kgs



MAHINDRA EARTHMASTER SX 4 WHEEL DRIVE (4WD)

Features	
Excavator Controls	Mechanical Levers
Instrument Cluster	Analog
	DIGi sense - GPS, GPRS base vehicle health monitoring & tracking system (Optional)
Warranty	1st Year* Standard Warranty, Unlimited Hours
Banana Boom Design	Yes
180 Degree Revolving Seats with Arm Rest and Seat Belts	Yes
Storage Box	Yes
Engine	
Mahindra DITEC	Turbocharged Intercooled Diesel Engine
No. of Cylinders	4
Displacement	3532 cc
Gross Horse Power	58.8 kw [79.89 HP] @ 2300 RPM
Peak Gross Torque	306 Nm@1300-1700 RPM
Hydraulics	
Optimized hydraulic system with fixed displacement gear pump delivering 115 liters at 2350 RPM, Circuit operating at 250 bars [3675 psi]	
System Type and Pressure	Open centre: 250 bars [3675 PSI]
Pump Type	Fixed Displacement Gear Pump
Pump Delivery	115 LPM @ 2350 RPM
Control Valves (Backhoe Loader)	Sectional Valve (Sandwich Type, Individually replaceable)
Transmission	
Four speed (four forward, 4 reverse), Low Noise, Four Wheel Drive [4WD], Synchro Shuttle Transmission with Electrically operated reversing shuttle and torque converter having Stall Ratio of 2.64:1	
Axles	
Rear Axle: Rigidly mounted drive axle, with outbound planetary final drives, driven by short drive shaft.	
Front Axle: Centrally pivoted, driven and steered for 4 wheel drive axle, with total oscillation of 16°	
Brakes	
Service Brakes: Hydraulically actuated, self-adjusting, maintenance free, oil immersed multi-disc, on the rear axle, operated by independent foot pedals, joined together for normal operation.	
Parking Brakes: Hand operated, inbuilt in the rear axle, low maintenance.	
Electricals	
Dust-proof switches, ignition controls for engine start, horn and reverse alarm, water and dust proof electrical connectors. 100Ah, 12V, Low maintenance battery. Alternator: 90 Ampere.	
Cabin	
Ergonomically designed air-conditioned cabin with contemporary styling, excellent operator comfort, day and night time visibility, rear view mirror, multiple storage options, two door access, sliding rear window, stowable doors and an integrated tool box. Cabin frame built with sturdy tubular sections and protected with CED technology for longer rust protection. Fully adjustable premium operator seat with safety belt. Excellent leg space, conveniently positioned control levers and pedals. Low line curved hood to enhance operator visibility.	
Steering	
Front wheel hydrostatic power steering with priority function and manual override in case of engine or hydraulic power failure. Working pressure of 145 bar.	

Technical specifications, features are subjected to change without prior notice. Image used are for representative purpose only. Accessories shown may not be a part of the standard product. Actual colours may vary. E&O.E. ^Standard exclusions apply. For further details on the warranty, please contact your dealer: * According to government approved independent agency, under manufacturer standard PER/VEH/21 certified at 1450 RPM. #When compared to a standard excavation cycle. ##Value measured under specific measuring condition.



Mahindra Construction Equipment

Mahindra & Mahindra Ltd | CE Business | Gate No. 2 | 1st Floor | Powerol Building | Akurli Road | Kandivali(E) | Mumbai-400 101.
Toll Free Helpline: 1800 209 6006 | Website: www.mahindraconstructionequipment.com | E-mail: mce.marketing@mahindra.com

Operator Information		
Front Cluster: With speedometer, turn and head light signals indicating RPM, Kilometers run, hours run, fuel level, temperature.		
Excavator Performance		
Maximum Dig Depth	4959 mm ^{##}	
Reach at Ground Level to Slew Centre	5761 mm	
Reach at Full Height to Slew Centre	2676 mm	
Maximum Working Height	6043 mm [#]	
Maximum Load Over Height	4302 mm [#]	
Excavator Pivot Mechanism	Side Shift	
Side reach to the Centre of the Machine	6291 mm	
Excavator Bucket Breakout Force	5199 kg	
Excavator Arm Breakout Force	3182 kg	
Lift Capacity Lift Bucket Pivot at full Reach	1449 kg	
Backhoe Bucket Capacity	0.27 CuM	
Loader Performance		
Dump Height	2715 mm	
Load Over Height	3267 mm	
Maximum Reach at Full Height	1100 mm	
Loader Bucket Breakout Force	6243 kg	
Loader Arm Breakout Force	5594 kg	
Loader Lift Capacity at Full Height	3428 kg	
Loader Bucket Capacity	1.1 CuM also available in 6-in-1 bucket	
Speed (Gear – F/R)		
1st F/R	5.66 Km/hr	
2nd F/R	9.11 Km/hr	
3rd F/R	20.00 Km/hr	
4th F/R	39.97 Km/hr	
Service Capacities	System Capacities	Service Replacement Capacities
Hydraulic Oil Capacity	100 Litres	50 Litres
Diesel Tank	120 Litres	120 Litres
Engine Coolant	17 Litres	Ready Mix (17 Litres)
Engine Oil	13.7 Litres	13 Litres
Transmission Oil	22 Litres	12 Litres
Rear Axle Oil	17.10 Litres	17.10 Litres
Front Axle Oil	9.10 Litres	9.10 Litres
Tyres	Standard (Traction)	Optional (Heavy Duty)
Front	12.5 x 18-12 PR	12.5 x 18-12 PR
Rear	16.9 x 28-12 PR	14 x 25-20 PR / 12 PR
Turning Radius		
Outside Bucket (Inner Wheels Braked)	4494 mm	
Outside wheels (Inner Wheels Braked)	3083 mm	
Outside Bucket (Inner Wheels Not Braked)	5099 mm	
Outside Wheels (Inner Wheels Not Braked)	3825 mm	
Shipping Weight of Vehicle		
Shipping weight of the Machine with Industrial Tyres	7730 kg	
Shipping weight of Machine with HD Tyres	7880 kg	